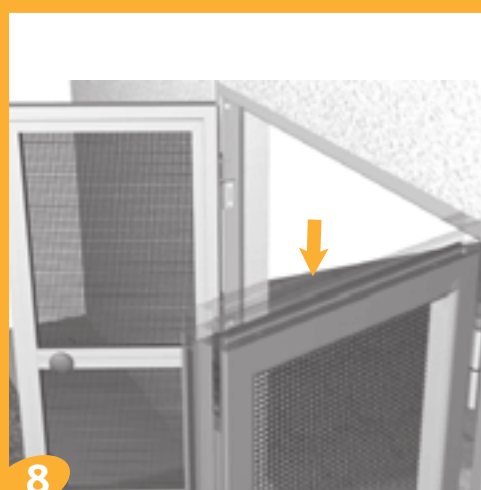
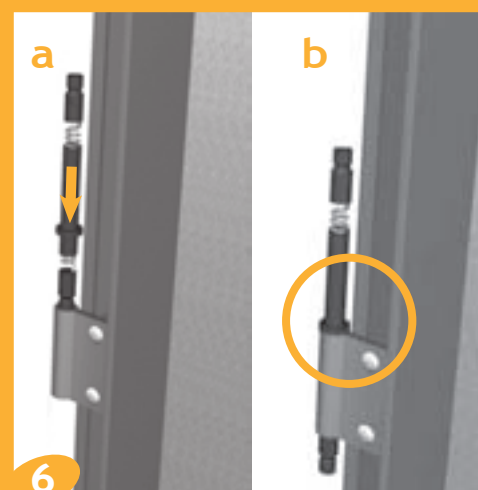
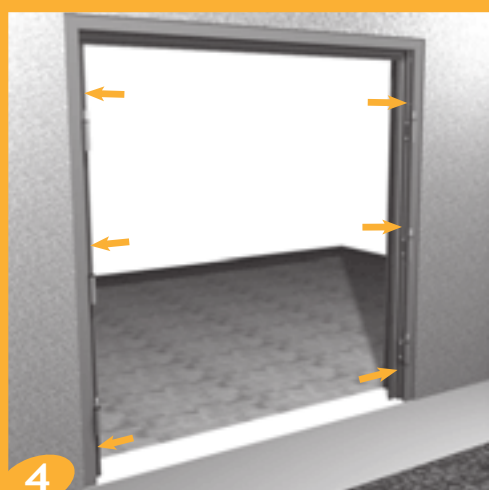
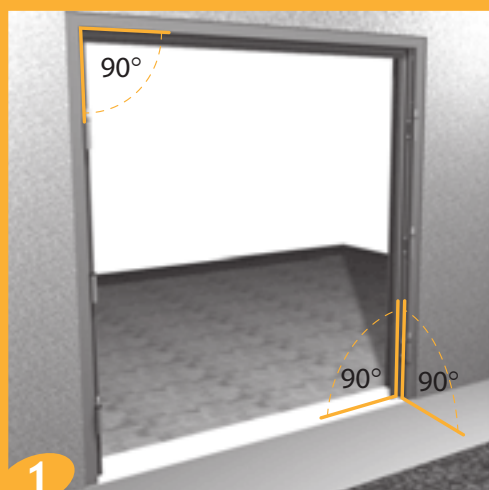


Istruzioni di montaggio per zanzariera, porta a battente con molla di ritorno.

32

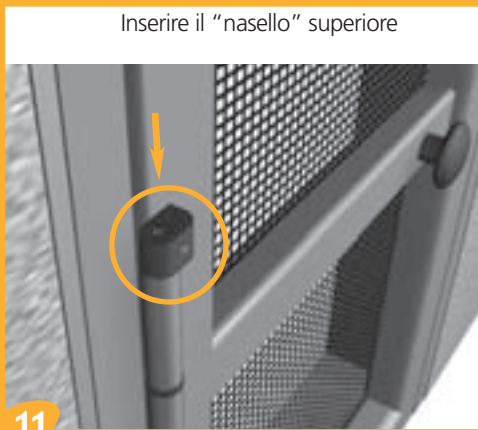
distinta

- 2 pomoli.
 - 1 barretta filettata M4x60.
 - 1 molla per "chiudiporta".
 - 2 tappi per molla.
 - 2 naselli.
- 2 viti S.T.E.I. M3x3 a punta UNI 5927, Zincate.
 - 1 chiave esagonale 1,5mm.
 - 1 chiave esagonale 4mm.



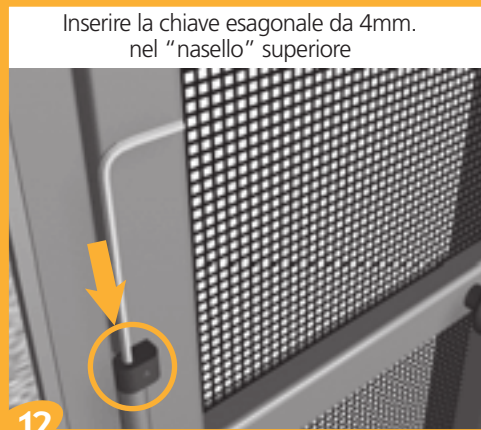


10



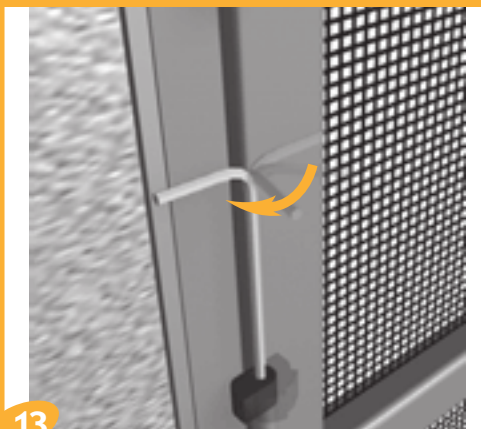
11

Inserire il "nasello" superiore



12

Inserire la chiave esagonale da 4mm.
nel "nasello" superiore



13

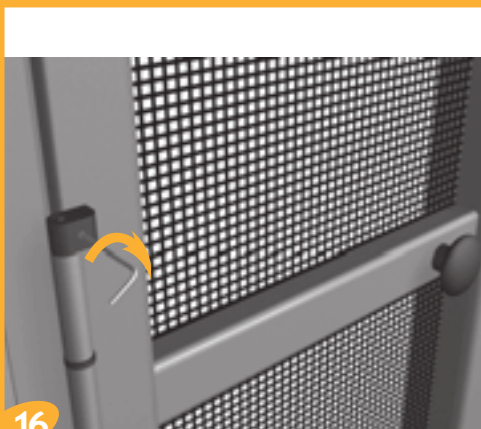


14



15

Ripetere i passi da 13 a 15
fino a dare 2 giri completi



16

Predisposizione foro per ante con catenaccio



17



18



19

L'azienda si riserva di apportare modifiche senza preavviso